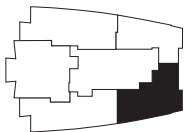
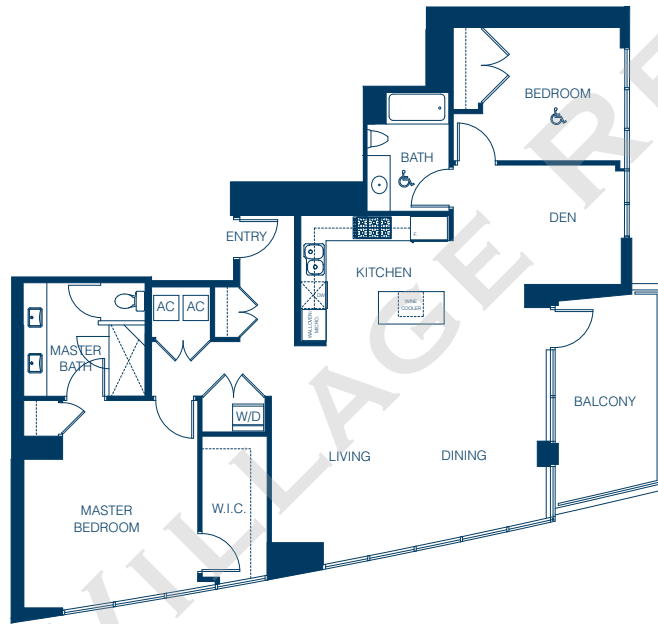


BAYSIDE

at the Embarcadero

TYPE L
Suites 2903, 3003
2 BR + DEN
1,458 sq. ft. approx.
Level 29 - 30



2903, 3003



All reference to square footage or floor area are approximate and are based upon the gross square footage of the Residential Units shown on the architectural plans. The actual square footage of the Residential Units will be less than the gross square footage. Buyer should not rely upon any advertising materials to determine the size of Buyer's Residential Unit. Only the as-built condition will determine the square footage of Buyer's Condominium. All renderings, floor plans and site plans shown in the sales office, brochures and other advertising materials are approximate illustrations only and are subject to change. Ask a Bayside sales person for details.